

e-Gram Suvidha: GIS-Based Facility Management Information System

About e-Gram Suvidha

e-Gram Suvidha is a Geomatics-based Decision Support System towards creation and management of various village-level facilities in rural areas. It provides an interactive and user friendly interface for map-based outputs. Digitized spatial features (locations & boundaries) of Blocks, Panchayats, Villages, Road & Railway network and non-spatial databases on related facilities constitute inputs to e-Gram Suvidha. It covers major sectors like Education, Health, Communication etc. and offers a seamless integration of additional facilities/sectors owing to its open-ended design. This is expected to serve as an efficient and an effective tool for all local bodies such as village / Janpad / Zila Panchayats, besides district administrations towards promoting e-Governance in rural administrations.

Salient Features

- Sector-specific compilation of thematic maps.
- Special tool bar for map viewing / editing.
- Support for zoom, pan and map composition.
- Built-in traverse-aid and distance computation.
- Query-based map output.
- Optimized identification of a suitable location meeting specified criteria.

Highlights

- CSI-Nihilent e-Governance award- 2005 for e-Gram Suvidha
- Showcased in Asian IT Ministers' Summit.
- Exhibited in ELITEX(Electronics and Information Technology Exposition) organized by MCIT, GoI for 3 consecutive years from 2003 –05
- Presented in International conference held at Kuala Lumpur, Malaysia.

Benefits

- Facilitates effective & efficient decentralized planning.
- Helps in better management of facilities
- Helps achieve transparency and easeness in planning process.
- Efficient updation of thematic maps.
- Offers scientific approach to facility planning

System Requirements

Minimum Hardware	Software
P-III and above	SPANS EXPLORER
HDD 40 GB	MS-ACCESS
15" Color Monitor	
WINDOWS Laser Color Printer	

User Response/ Feedback

"The Success of the e-Gram Suvidha System spotlights India's geo-spatial productivity at a critical time."Dr.Robert Moses, President & CEO of PCI Geomatics & Member of OGC.

"Felicitated for pioneering efforts in the development of e-Gram Suvidha product".
Pallavi Jain Govil, CEO, Zila Panchayat, Bhopal.

"Plays an important role in planning of creation and implementation of new acilities/schemes".Collector, Dhar & Mandla

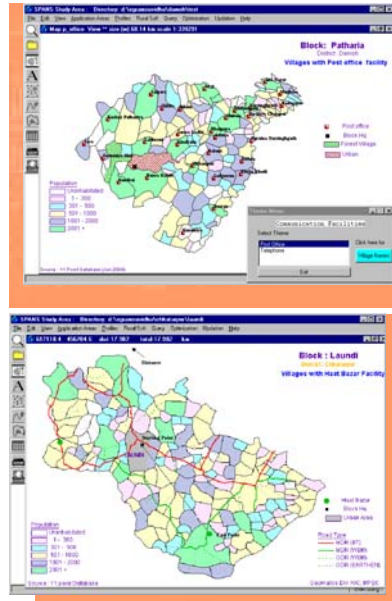
→	PCI e-Gram Suvidha : A geomatics approach for facility planning for sustainable development in Rural Areas
→	Brochure of e-GramSuvidha
→	Full Paper
→	CIO India-GIS Made Easy



GEOMATICS – BASED FACILITY MANAGEMENT INFORMATION SYSTEM

About e-Gram Suvidha

- e-Gram Suvidha is a Geomatics-based Decision Support System towards creation and management of various village-level facilities in rural areas.
- Provides an interactive and user friendly interface for map-based outputs.
- Digitized spatial features (locations & boundaries) of Blocks, Panchayats, Villages, Road & Railway network and non-spatial databases on related facilities constitute inputs to e-Gram Suvidha
- Covers major sectors like Education, Health, Communication, Roads.
- Offers a seamless integration of additional facilities/sectors owing to its open-ended design.
- Deployed in 5 districts of Madhya Pradesh.



Salient Features

- Sector-specific compilation of thematic maps.
- Special tool bar for map viewing / editing.
- Support for zoom, pan and map composition.
- Built-in traverse-aid and distance computation.
- Query-based map output.
- Optimized identification of a suitable location meeting specified criteria.

Highlights

- CSI-Nihilent e-Governance award- 2004 for e-Gram Suvidha
- Showcased in Asian IT Minister's Summit & ELITEX (Electronics and Information Technology Exposition organized by MCIT, GoI for 3 consecutive years from 2003 –05.
- Presented in International conference held at Kuala Lumpur, Malaysia.

User Response/ Feedback

“The Success of the e-Gram Suvidha System spotlights India’s geo-spatial productivity at a critical time.”

Dr. Robert Moses, President & CEO of PCI Geomatics.

Felicitated for pioneering efforts in the development of e-Gram Suvidha product.

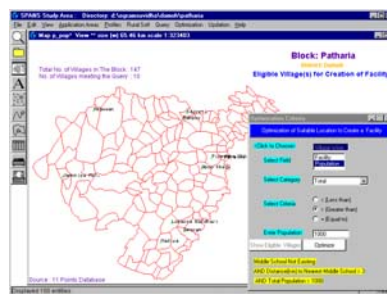
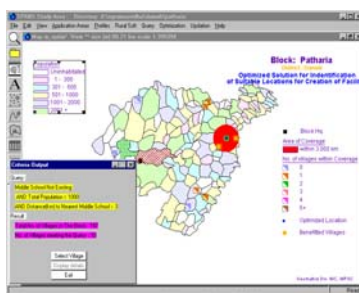
Pallavi Jain Govil, CEO, Zila Panchayat, Bhopal.

Plays an important role in planning of creation and implementation of new facilities/schemes.

Collector, Dhar & Mandla

Benefits

- Facilitates effective & efficient decentralized planning
- Helps in better management of facilities
- Helps achieve transparency and easeness in planning process.
- Efficient updation of thematic maps.
- Offers scientific approach to facility planning



System Requirements

Minimum Hardware
P-IV, 256 RAM
HDD 40 GB
15" Color Monitor
Laser Color Printer

Software
GIS Software
MS-ACCESS
WINDOWS

Contact:

Geomatics Division
National Informatics Centre
Madhya Pradesh State Centre
'C' Wing, Basement,
Vindhyachal Bhawan,
Bhopal-462004 (M.P.)
Tel: 91-755-2551265
e-mail: gis-mp@nic.in